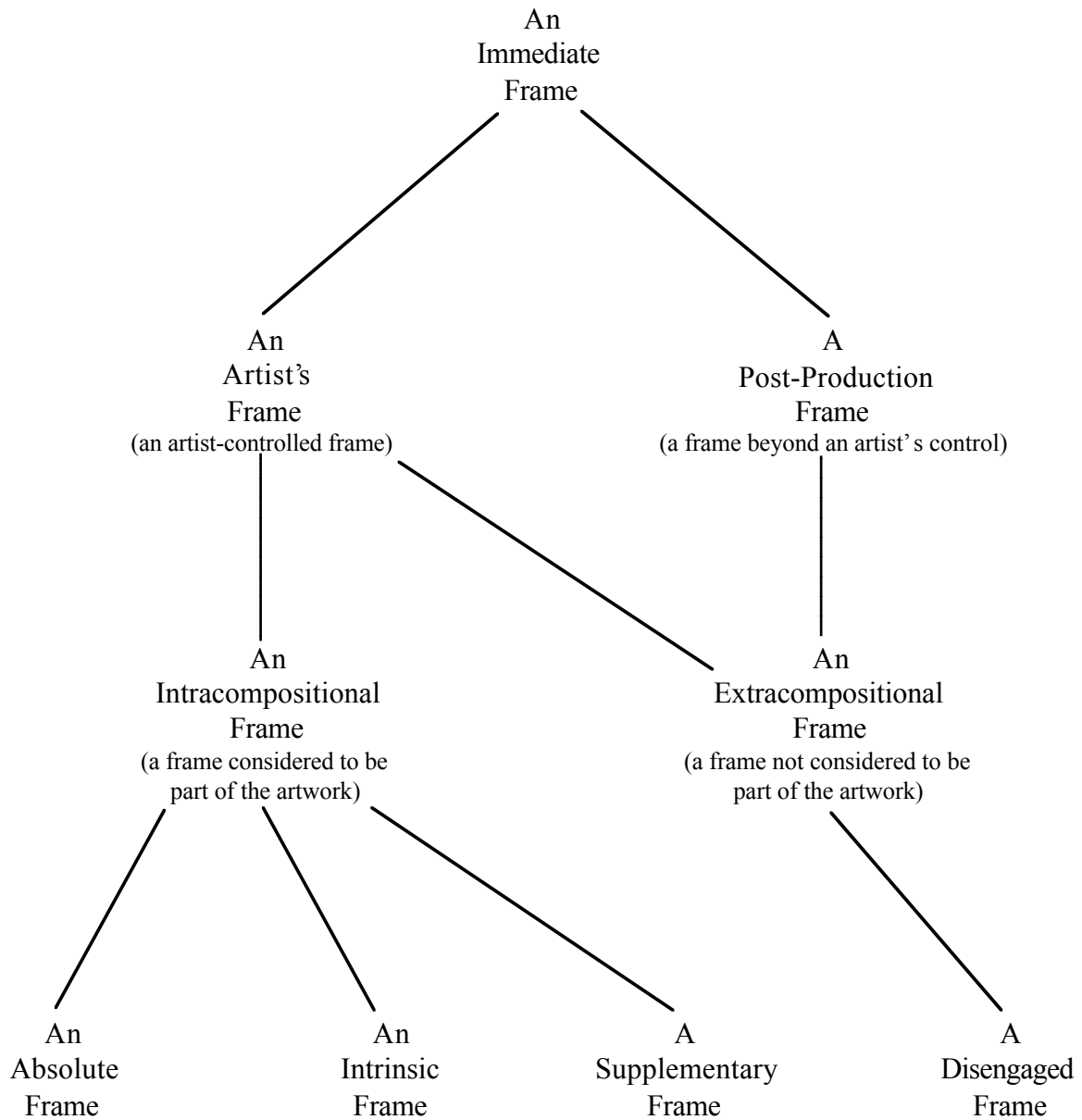


Ian Geraghty

FRAMES, PLINTHS AND VITRINES IN CONTEMPORARY ART:
Categories, definitions and examples of physical frames (including plinths and vitrines).



An Immediate Frame:

An 'immediate frame' is a frame that is immediately attached or physically connected to an artwork, and which the viewer stands on the 'outside' of. An 'immediate frame' can potentially be transported with an artwork from setting to setting. It is a broad term which covers material frames such as picture frames, plinths, vitrines and display cases. An 'immediate frame' is opposite to an 'extended frame' (an immersive kind of frame experienced by the viewer from 'within' the frame or which is passed through in order to experience a work).

An Artist's Frame:

An 'artist's frame' is a frame that has been conceived, designed and/or fabricated by an artist specifically for one (or more) of his or her own artworks. This term is often used in connection with picture frames produced by artists during the mid to late nineteenth century (such as Ford Madox Brown, Dante Gabriel Rossetti, James Abbott McNeill Whistler, Edgar Degas, and Georges Seurat) when artists started to take a more widespread interest in how their paintings were to be presented, but examples of 'artist's frames' also precede and continue on from this influential and relatively well documented period.

A Post-Production Frame:

A 'post-production frame' is a frame that has been added to an artwork after the artist in question has relinquished control of its production. This includes frames that have been applied to artworks by collectors, or frames that are the result of re-framing without input from the artist. A 'post-production' frame is therefore beyond the authorial control of the artist and can be seen as the binary opposite of an 'artist's frame'.

Intracompositional / Extracompositional Frames:

An 'intracompositional frame' is outlined by John H. Pearson in his essay 'The Politics of Framing in the Late Nineteenth Century' (1990) as a frame (in both literature and painting) that is considered to be an element of the artistic composition. For example, with regard to literature, Pearson presents Cervantes' Preface to his sequel of *Don Quixote* as 'intracompositional' because the "Preface and novel collaborate rather than remain utterly distinct" (p.15). In relation to visual art, the notion of an 'intracompositional frame' deals directly with the question of whether a frame is integral to an artwork or not.

An Absolute frame:

An 'absolute frame' refers to an artwork which can be described in its entirety as a physical frame. The removal of the frame would remove all trace of the artwork. Examples of this type of frame include:

Piero Manzoni's *Socle du Monde (Base of the World)* (1961).

Gavin Turk's *Stool* (1990).

Gareth Jones' *Modular Plinth* (2003).

An Intrinsic frame:

An 'intrinsic frame' is considered to be an integral and inseparable part of an artwork in relation to its form, signification and content. It is in some way built into the actual artwork, forming an in-built frame or in-built presentation system. An 'intrinsic frame' demarcates the boundary of an artwork from its outer edge. A key defining characteristic is that it constitutes part of what is being presented, rather than frames what is being presented. It is therefore impossible or unthinkable to photographically document or explain a work without also representing its 'intrinsic frame'. The materials for an 'intrinsic frame' are invariably listed on gallery labels and 'list of works'/room sheets etc. The removal of an 'intrinsic frame' from an artwork would essentially destroy the work. 'Intrinsic frames' therefore need to be protected from wear and tear whilst being exhibited, transported and stored. Examples of this type of frame include:

The gilded frame in Jeff Koons' *Christ and the Lamb* (1988).
The glass and steel container in Damien Hirst's *A Thousand Years* (1990).
The refrigeration display case in Marc Quinn's *Eternal Spring (Sunflowers) 1* (1998).
The Pedestal in Franz West's *Two Sculptures on a Pedestal* (1998).

A Supplementary frame:

A 'supplementary frame' is conceived and developed separately from an artwork - often after its completion - but is still considered to be an important (rather than an essential) part of the work. A 'supplementary frame' draws attention to itself as well as to what it contains, but it is usually regarded as secondary to what is being presented. Artworks with 'supplementary frames' are therefore often illustrated or described without their frames. However, because 'supplementary frames' are neither conceptually inert nor readily replaceable, they do require an increased level of care when it comes to the conservation of the artwork. Examples of artworks with 'supplementary frames' include:

Helen Chadwick's *Wreaths to Pleasure* series (1992-93).
Hany Armanious' *Untitled hair drawings #2-5* (2003).
Michael Lindeman's *New York Ghost* series (2004).
John Spiteri's *An Architect's Dream* (2006).

A Disengaged frame:

A 'disengaged frame' directs attention towards the artwork without ever appearing to be part of the artwork. It rarely strays from convention and could be said to have aspirations towards 'neutrality' or 'invisibility'. A 'disengaged frame' has more of a utilitarian function than a conceptual function and is often perceived as part of the museum/gallery furniture. It can usually be removed or replaced without drastically affecting the content or dimensions of a work. It is therefore unlikely that a critical review of an artwork would dwell upon a 'disengaged frame'. (It should be noted, however, that certain 'disengaged frames' may, in years to come, be regarded as having historical and contextual significance, but this would not necessarily alter the boundary of the actual work). Examples of this type of frame include:

Transferable museum box frames for works on paper.
Generic white gallery plinths.

Important copyright information

This thesis extract was presented as a poster at the IIC congress Conservation and Access in London from September 15-19, 2008. The text was first published in the IIC 2008 congress proceedings. Permission to publish this text on the INCCA website has kindly been given by the IIC and the author. This thesis extract may only be downloaded for personal use. It may not be redistributed. Permission for redistribution must be requested from IIC and the author.